

NATIONAL RADIO ASTRONOMY OBSERVATORY  
Green Bank, West Virginia

March 7, 1983

TO: C. Bignell - Operations Group  
FROM: B. Peery - Site Group  
SUBJECT: Control Building

Attached is a conceptual floor plan for the main control center. This is the first arrangement in an attempt to meet the requirements outlined in Volume I of the proposal.

For comparison, there is attached a schedule of the spaces, their approximate dimensions, and areas of what I consider similar use spaces at other NRAO sites.

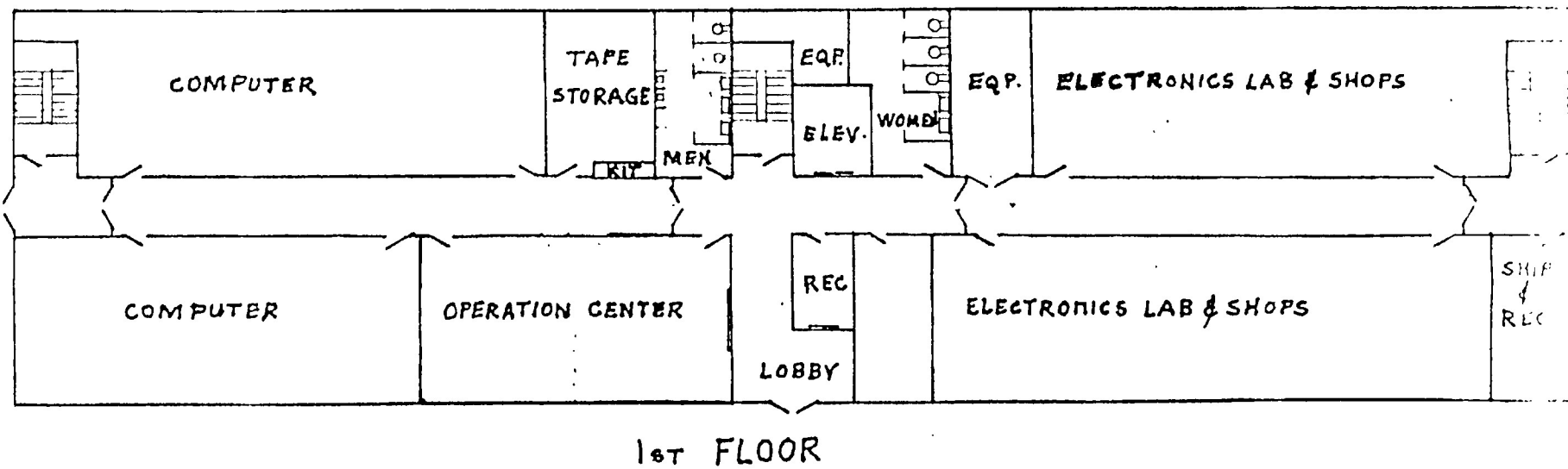
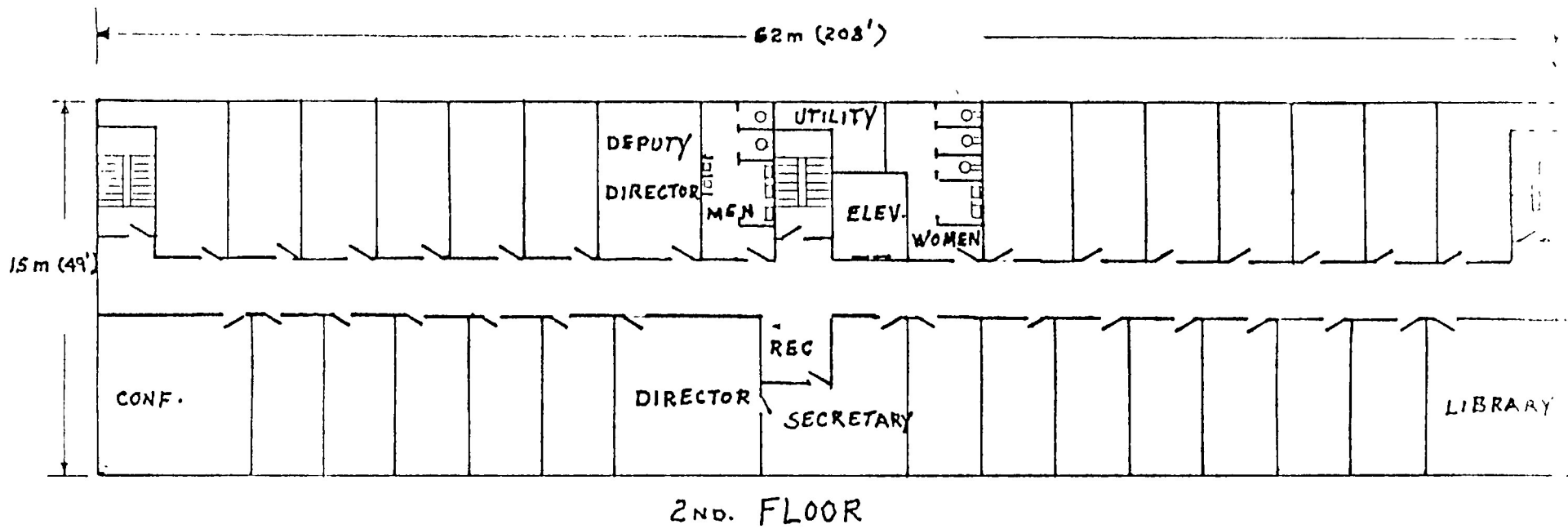
You will note the areas compare favorably except for electronics and shops. Office spaces could make up this difference. It is understood that all areas are subject to revision as actual equipment to be used is determined. The large areas such as computer and electronics can and will be sub-divided as equipment and functional sub-divisions are determined. It is very possible a number of offices on the second floor will be opened up into larger spaces for labs, shops, or computer spaces. A large telephone equipment room and a larger equipment room (building equipment) might be required.

We will need, before going into final design, to develop as complete as possible a schedule and description of the functions to be performed in this building. This would include a personnel list with each of their requirements, such as work space (lab and/or office), and the physical location one to the other. Equipment layouts will be required for these areas also.

Memo #123 is a similar conceptual plan for the individual sites.

Your thoughts and comments will be welcomed.

BP/bbs  
Enc.



Space Uses & Approximate Sizes

This Bldg.		Similar Area other Sites (ft <sup>2</sup> )			
Name	Size	Area (ft <sup>2</sup> )	CV	G.B.	VLA
Lobby	(16x9)	144	390	384	297
Receptionist	(8x12)	96			
Operation Center	(40x40)	1600	—	600/990	900
Computer	(52x21)	1092	1240		
Computer	(60x21)	1260			
Tape Storage	(10x21)	210	450	—	216
Electronics & Shop	(80x21)	1680	5000	4000	4000
Electronics & Shop	(61x21)	1281			
Director	(20x21)	420	420	192	240
Deputy Director	(14x21)	294	340	—	—
Office - 1	(10x21)	210	140/260	192	126
Office x 25	(10x21)	5250			
Library	(20x21)	420	1775	720	400
Conference	(20x21)	420	560	432	345
Receptionist - 2nd Fl.	(10x8)	80	420	—	360
Secretary	(20x21)	340			
Men	(10x21)	210	117	165	120
Men	(10x21)	210			
Women	(10x21)	240	—	120	72
Women	(10x21)	240			
Elevator	(10x12)	220	—	120	72
Elevator	(10x12)	120			
Stair	(8x18)	144	120	120	144
Stair	(8x18)	144			
Stair	(8x18)	144	—	—	—
Stair	(8x18)	144			
Stair	(8x18)	144	—	—	—
Stair	(8x18)	144			
Utility Equipmt	(16x5)	80	—	—	—
Utility Equipmt	(16x5)	80			
Equipment	(10x21)	210	350	—	—
Ship & Receiving	(16x21)	210			
Corridor	(8x22)	1792	—	—	—
Corridor	(8x23)	1624			

Total  
203 x 49 x 2 = 19894

20797