

12 METER MILLIMETER WAVE TELESCOPE

MEMO No. 81

ELECTRONIC SPACE SYSTEMS CORPORATION
OLD POWDER MILL ROAD

CONCORD, MASSACHUSETTS 01742



TELEPHONE 617-369-7200
TELEX 92-3480

IN REPLY REFER TO J-1946

September 24, 1981

Mr. J. Marymor
Contracts Manager
National Radio Astronomy Observatory
Edgemont Road
Charlottesville, Virginia 22901

Reference: AUI-197

Dear Mr. Marymor:

Confirming my teleon today with Buck Perry, enclosed is the packaging and delivery information requested on the panels being manufactured under the referenced contract. The dimensions for skids utilize a previous packaging design that we would like to retain, although we are aware that it does exceed the length that you had mentioned. To redesign the packaging would be a major effort on our part.

The enclosed sketches illustrate the general approach to the packaging, but the actual dimensions will change. The outside dimensions, however, will be essentially as indicated on the Table.

We would like your thoughts in this area. Please let me know if you need any additional information. As always, it is a pleasure to work with National Radio Astronomy Observatory.

Very truly yours,

ELECTRONIC SPACE SYSTEMS CORPORATION

Susan M. Cuevas
Sales Manager

SMC/jmm

Enclosures: Dwg. E1228-89; Sketch

cc: Buck Perry, With Enclosures

September 2 1981

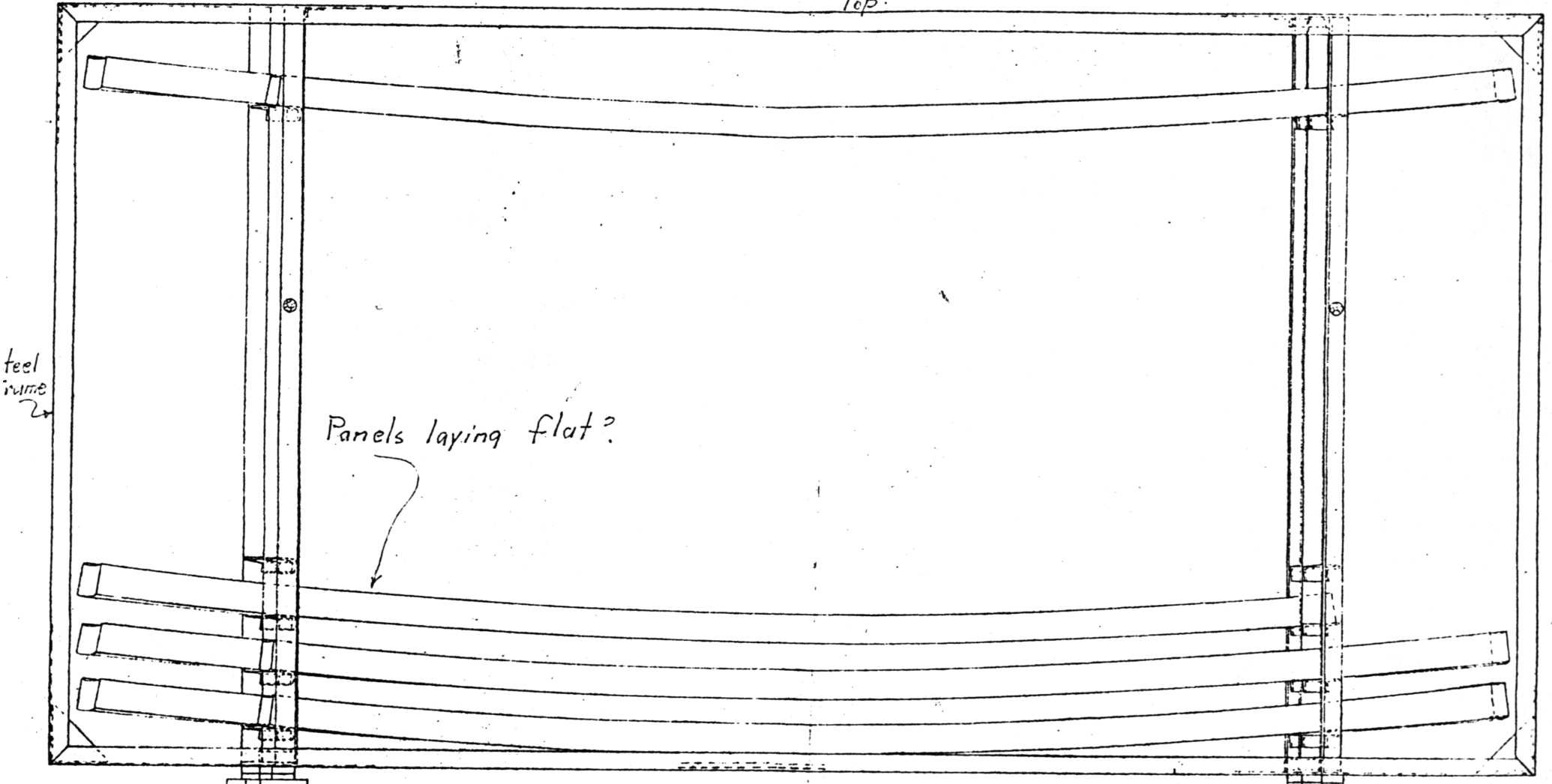
NRAO PANELS

Preliminary Shipping and Delivery Information

<u>Skid #</u>	<u>Dimensions</u>	<u>Ft³</u>	<u>Weight - lbs</u>	<u>Contents</u>	<u>Availability Date</u>
1	62"H x 187"L x 75"W	503	1750	6 inner/6 outer panels	1-20-82
2	84"H x 187"L x 75"W	683	1900	20 inner panels	1-11-82
3	87"H x 112"L x 70"W	395	1800	22 outer panels	1-11-82
4	87"H x 112"L x 70"W	395	1800	22 outer panels	2-19-82

our enclosed
Trucks. --- 82"H x 168"L x 91"W

Top

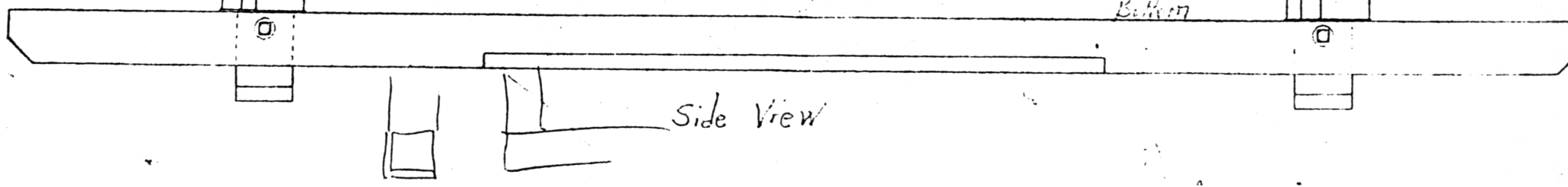


feel
rune
2

Panels laying flat?



Bottom



Side View