

Interoffice

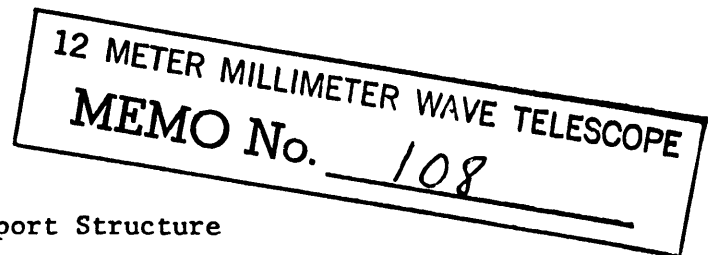
National Radio Astronomy Observatory
Charlottesville, Virginia

Dec. 24, 1981

To: W. Horne

From: L. J. King

Subject: Surface panel and the Feed Support Structure

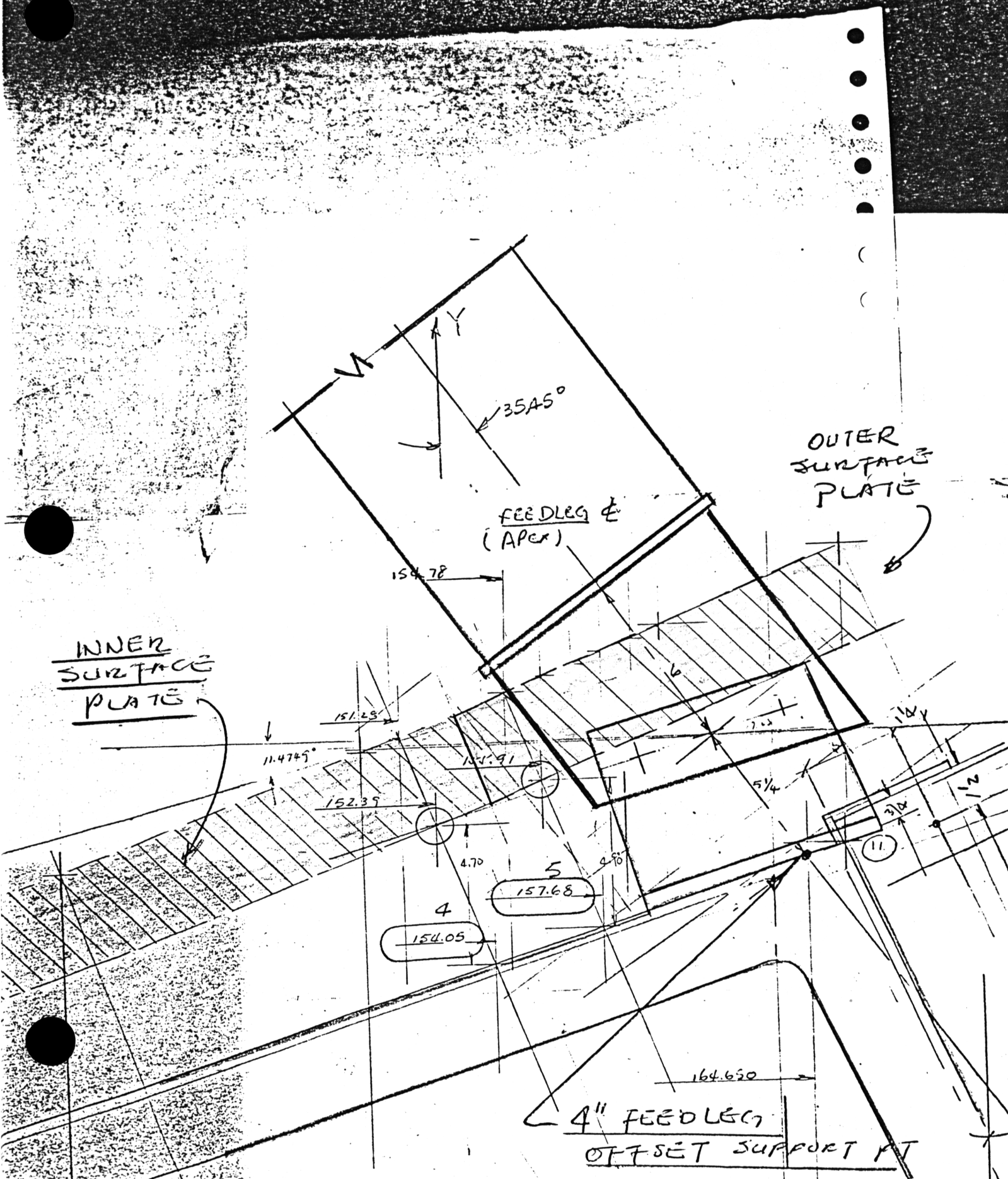


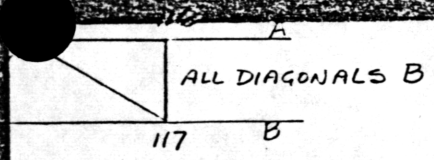
I have revised the backup structure drawings to incorporate:

- 1) the 5.50" apex height increase, and
- 2) the reduced feed structure offset angle of 1.3 degrees.

The relative locations of the feed support and the surface panels are shown on p.2. A 5" by 13" corner of an outer panel needs to be removed at each feed support. Total of four outer panels are effected. Additional panel supports may be provided near the cut-offs to increase panel stiffness.

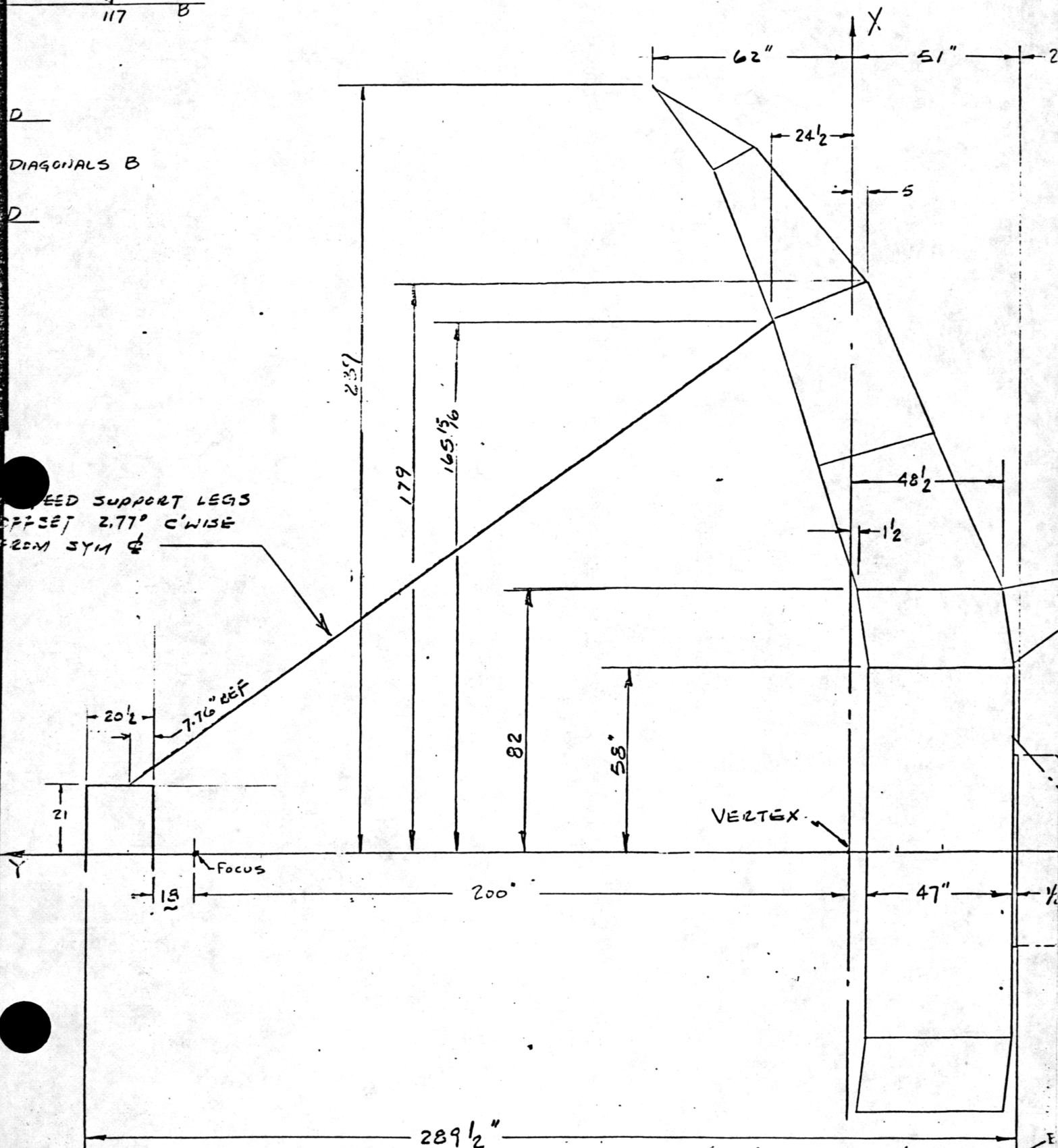
Relevant informations of the revised drawings (designated as Rev. A) are zeroxed for your reference.





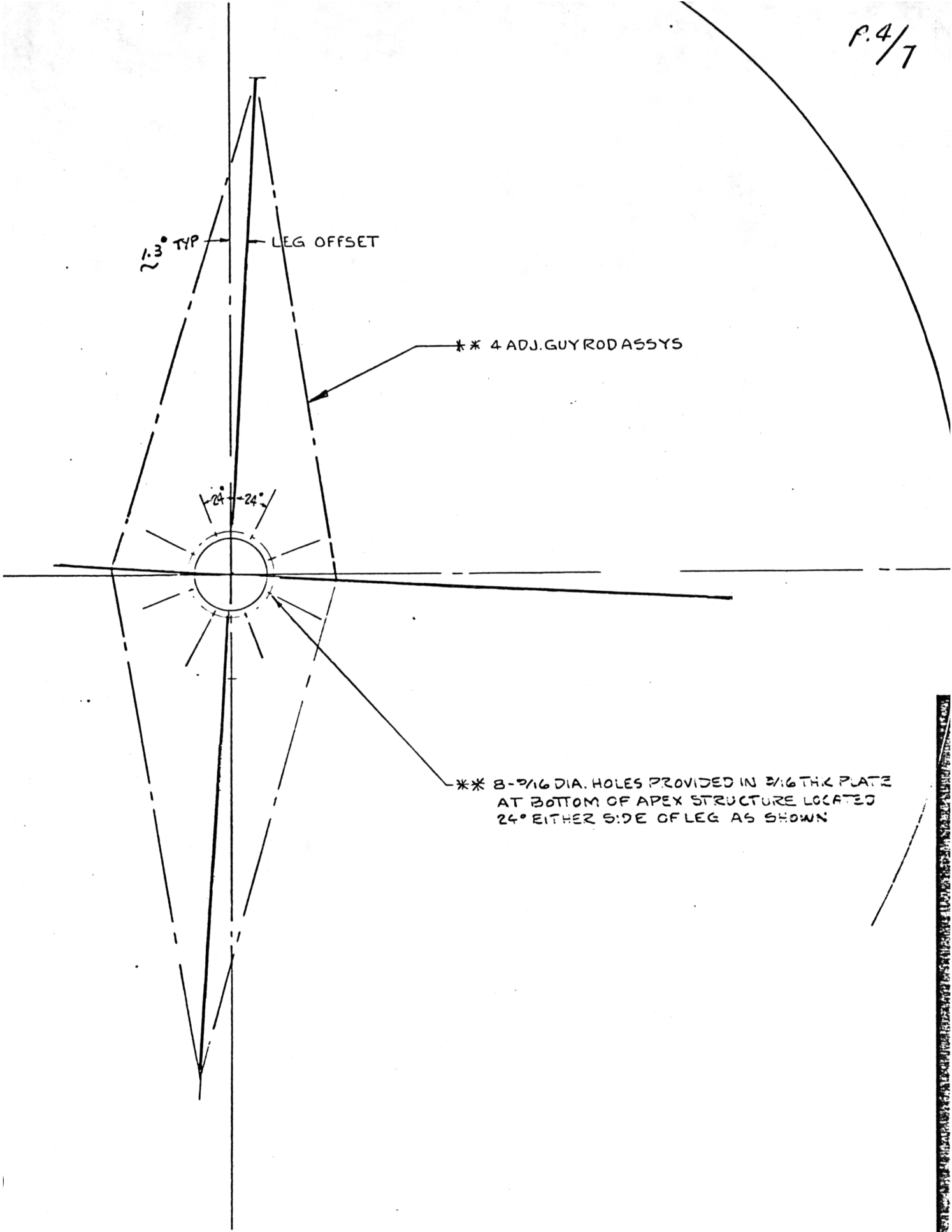
D
DIAGONALS B
D

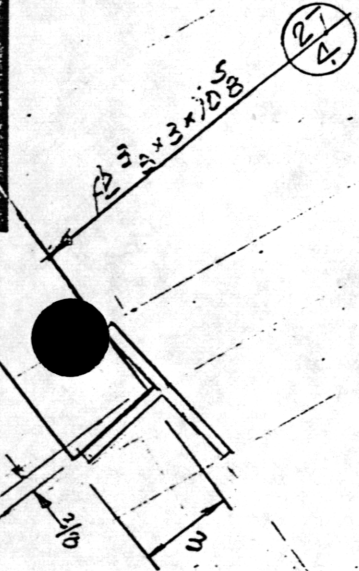
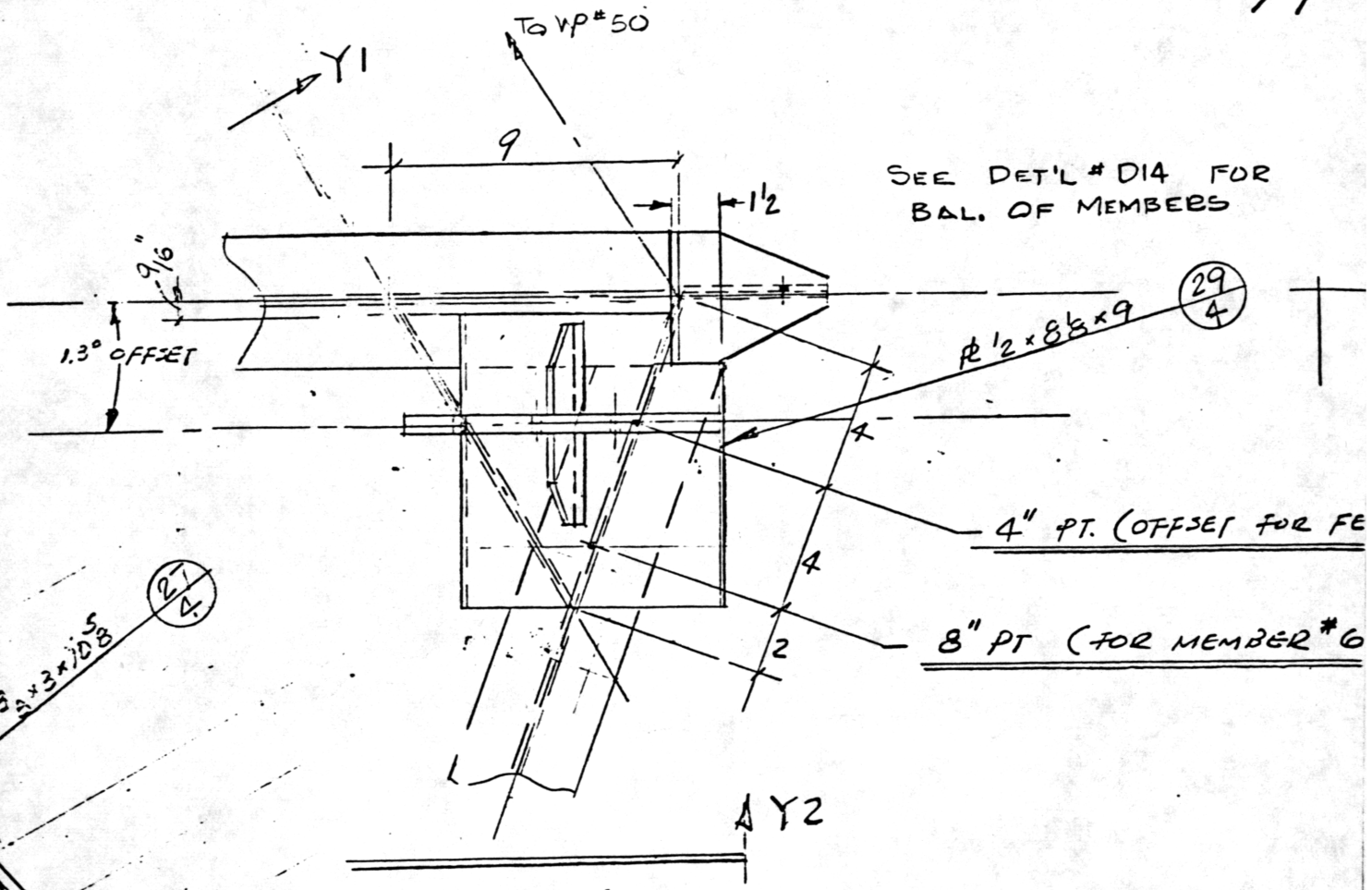
NEED SUPPORT LEGS
OFFSET 2.77° C'WISE
FROM SYM &



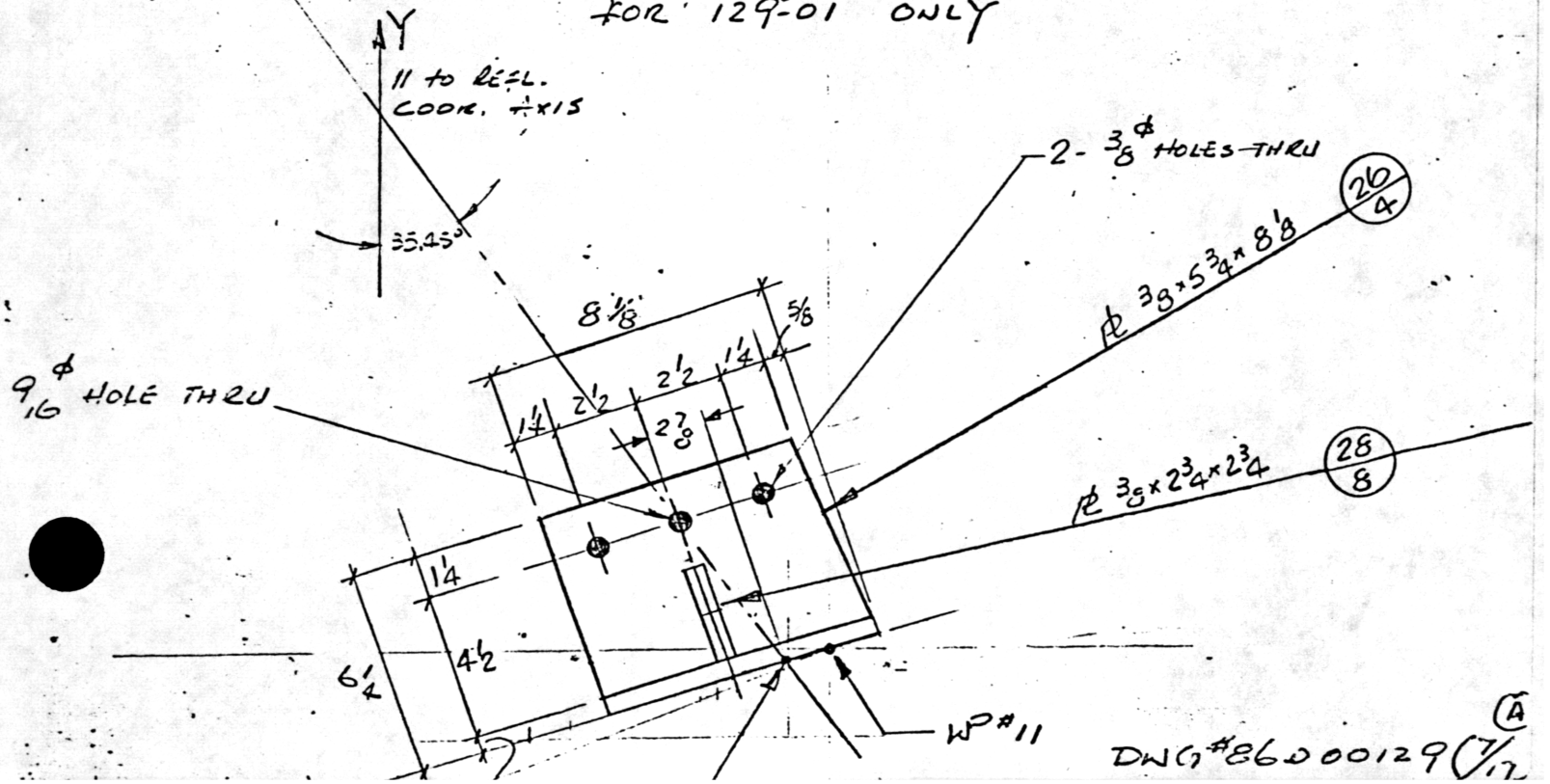
MEMBER SIZE

DWG # 86 D 00127 (2/4) (A)





PLAN JOINT #11 (#62)
FOR 129-01 ONLY



4 LEGS E.S. @ 90°

P. 6/7

7 4

6 8

8 4

9 4

21 TYP.

26.01
TYP

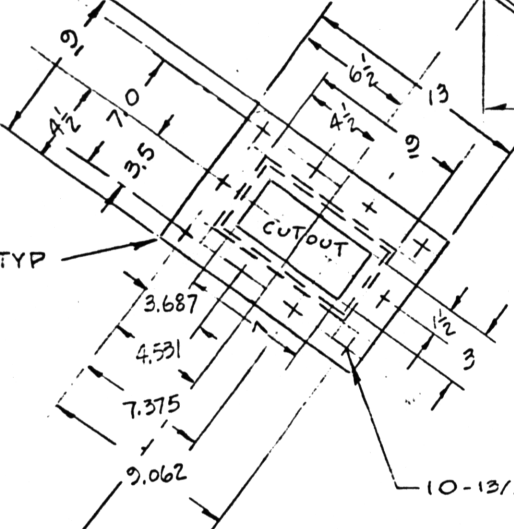
7.76 REF

4 1/2 TYP

10 TYP

30.47
TYP

ER 4 PLACES TYP



10 - 13/32 D. THRU

35.45° REF

3, AND 9 & 1

P. 7/7

