

Panel Supports

1. Here is a simple suggestion to meet our needs--which perhaps I should spell out:
 - (a) Correct panel support with dish at all elevation angles.
 - (b) "Correct" means the very minimum of bending moments applied to the panels.
 - (c) Ability to take the thermal expansion differences (panel to BUS).
 - (d) Simple to adjust--no backlash, easy access, small screw pitch (i.e., large turns per mm).

2. The sketch does all this. It works as follows:
 - (a) Install nuts A and B with screwed rods to put panel in about the right position. Tighten A and B and leave them alone.
 - (b) Make final panel elevation correct using the turn buckle. HH's clever suggestion is to make threads A and B both RH but different threads per inch, thus getting larger turns per micron.

3. I think this is OK, unless someone else has a better idea.

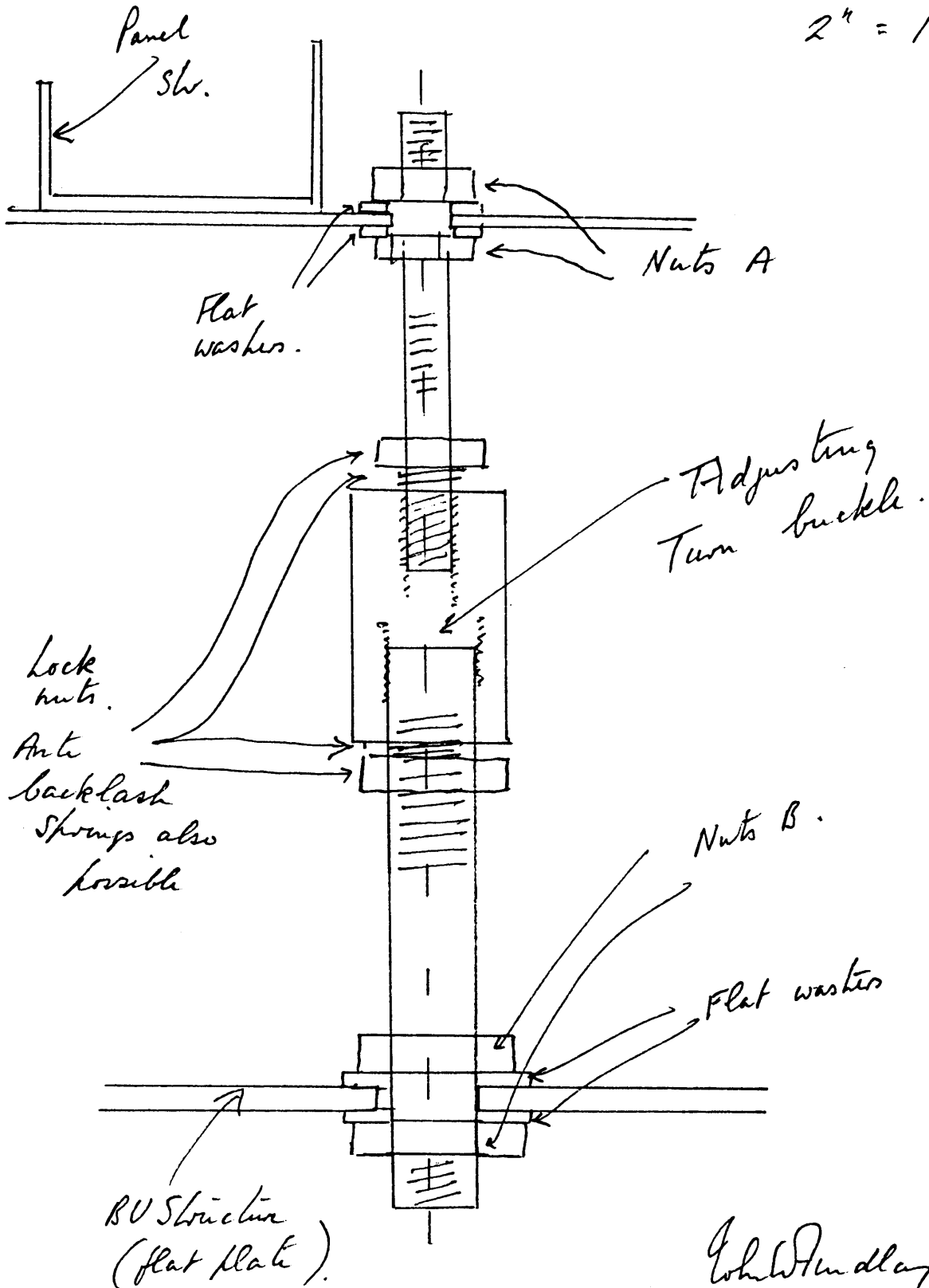
John W. Findlay

February 4, 1982

Panel Supports

Scale approx

2" = 1"



John D. Dudley
(HH made a clever suggestion!)

Feb 4 1982