

2/23/82 G.M.P.

Feb. 18, 1982

To: G.M. Peery  
From: W. G. Horne

Subject: 12M Panel Support Assembly

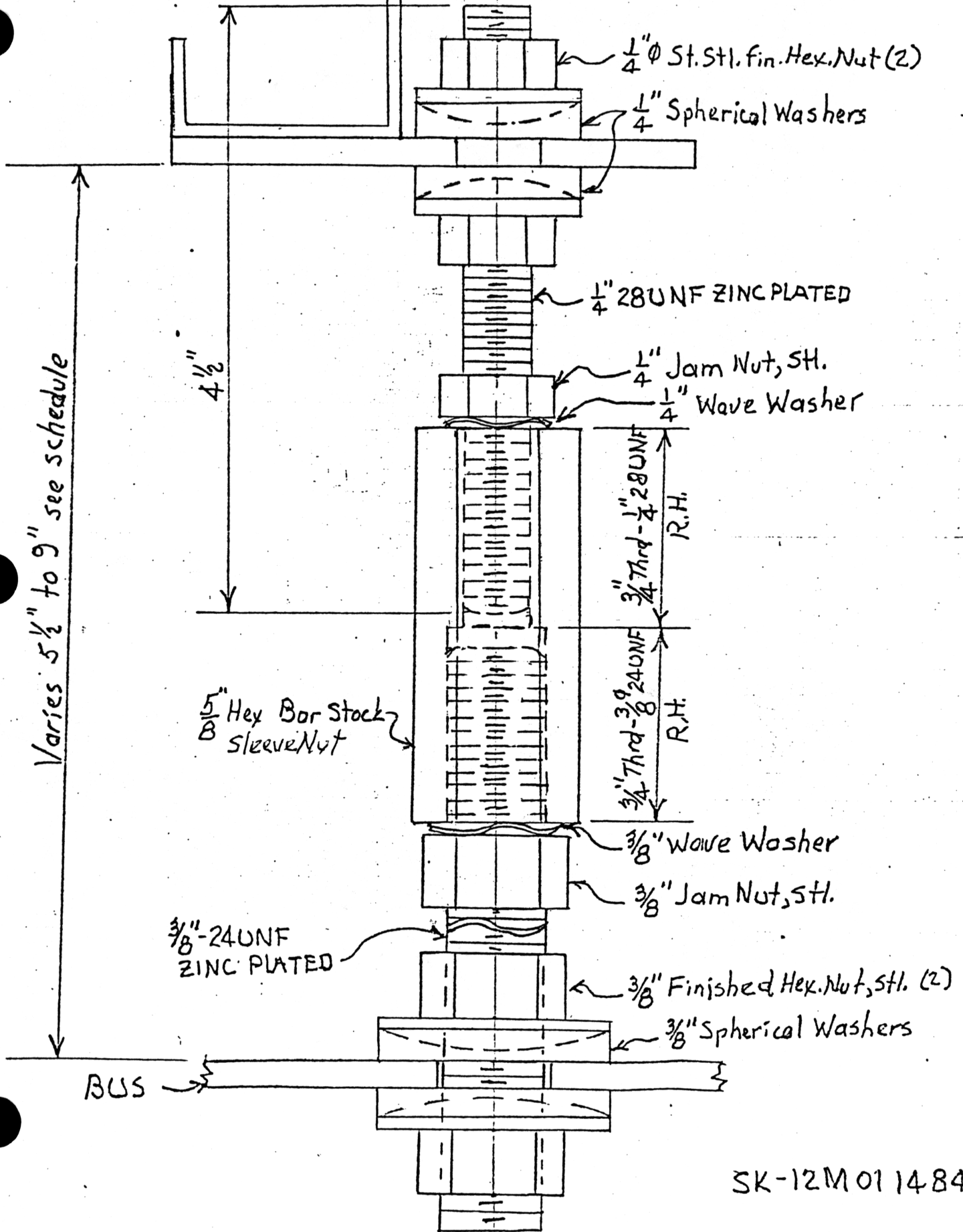
Attached is SK 12M 011484 showing the proposed panel support assembly. I think J. Findley would like a couple of these to experiment with. Material required for one assembly is as follows:  
(Part No's. are McMaster Carr No's)

- 2- $\frac{1}{4}$ "  $\phi$  Steel Spherical Washers # 91131A030
- 2- $\frac{3}{8}$ "  $\phi$  steel Spherical Washers # 91131A050
- 2- $\frac{1}{4}$ " 28 UNF stainless stl. Machine Screw Nuts # 91842A029
- 2- $\frac{3}{8}$ " 24 UNF stainless stl. Machine Screw Nuts # 91842A031
- 1- $\frac{1}{4}$ "  $\phi$  Wave Washer # 90134A029
- 1- $\frac{3}{8}$ "  $\phi$  Wave Washer # 90134A031
- 1- $\frac{1}{4}$ " 28 UNF stl. Finished Hex. Jam Nut # 90496A029
- 1- $\frac{3}{8}$ " 24 UNF stl. Finished Hex Jam. Nut # 90496A031
- 1- $\frac{1}{4}$ " 28 UNF zinc Plated Steel Rod # 98915A029
- 1- $\frac{3}{8}$ " 24 UNF zinc Plated Steel Rod # 98915A031
- 1- $\frac{5}{8}$ " Hex Steel Rod  $\times$   $1\frac{1}{2}$ " long # 9110K14

28 and 24 tpi differential gives a pitch of

150  $\mu$ m per turn

2/23/82 *gsm*



SK-12M011484